

Backup App v7

Quick Start Guide for Mac OS X

Revision History

Date	Descriptions	Type of modification
30 Jun 2016	First Draft	New
10 Nov 2016	Modified Ch 7.3 Configure Backup Schedule for Automated Backup	Modification
25 Nov 2016	Added Backup Set Options to Ch 5 Create a File Backup Set, Advanced Options to Ch 7 Start a Manual Backup, and Restore Options to Ch 8 Restore Data; Modified Ch 3 Download Backup App, and Ch 3 Install Backup App; Combined "Technical Assistance" and "Documentation" as Ch 9 Contacting Backup App	Modification
16 Dec 2016	Modified Ch 5 Create a Backup Set, Ch 7 Run Backup Jobs and Ch 8 Restore Data; Corrected typo in Copyright Notice and Trademarks; Removed "-ing" verb form from all chapter titles for consistency	Modification
3 Feb 2017	Added instructions and screen shots for Encryption key handling in Ch. 5	New
5 Apr 2017	Added new Encryption Type option in Create a Backup Set section; Revised screen shot with larger field for entering backup sever IP at login	New

Table of Contents

1	Requirements for Backup App on Mac OS X	1
	Hardware Requirements	1
2	Get Started with Backup App	2
3	Download and Install Backup App	3
	Download Backup App	3
	Install Backup App	3
4	Start Backup App	8
	Add an Backup App Shortcut Icon to the Desktop.....	8
	Login to Backup App	9
5	Create a Backup Set.....	11
6	Overview on Backup Process	20
7	Run Backup Jobs	21
	Login to Backup App	21
	Start a Manual Backup.....	21
	Configure Backup Schedule for Automated Backup.....	24
8	Restore Data	28
	Login to Backup App	28
	Restore Data	28
	Appendix	36
	Uninstall Backup App	36

1 Requirements for Backup App on Mac OS X

Hardware Requirements

- Dual Core architecture or above
- Minimum: 2 GB
Recommended: 4 GB or more
- Minimum: 500 MB
- TCP/IP
- Java 1.7u76 or above

2 Get Started with Backup App

This quick start guide will walk you through the following 5 major parts to get you started with using Backup App.

Download and Install

Download and install Backup App on your Mac

Launch the App

Launch and log in to Backup App

Create a Backup Set

Create a backup set according to your preferences

Run Backup Jobs

Run the backup jobs to back up data

Restore Data

Restore backed up data to your system

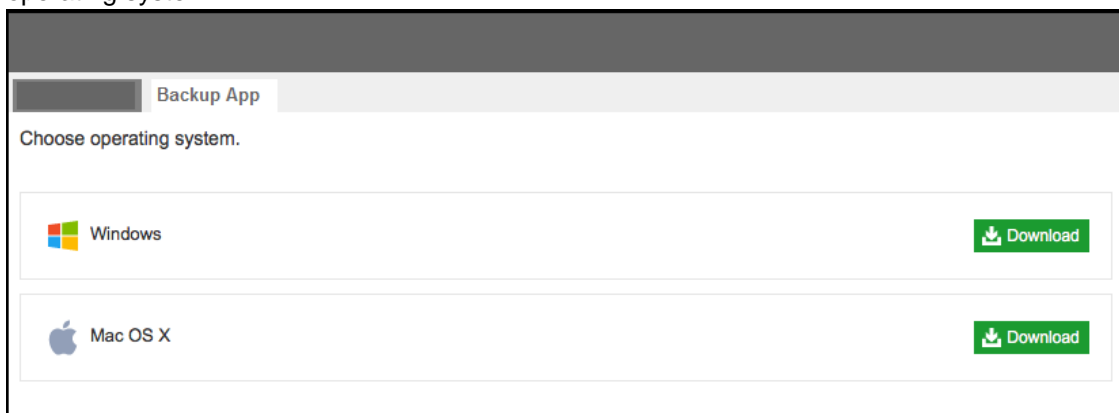
3 Download and Install Backup App

Download Backup App

1. In a web browser, click the blue icon on the top right corner to open the download page for the Backup App installation package file from your backup service provider's website.



2. In the **Backup App** tab of the download page, you can choose the Backup App installer by operating system.

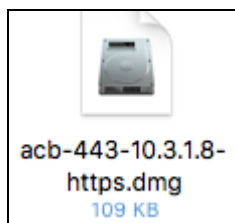


3. In the Mac OS X section, click the **Download** icon to download the Backup App installation package.

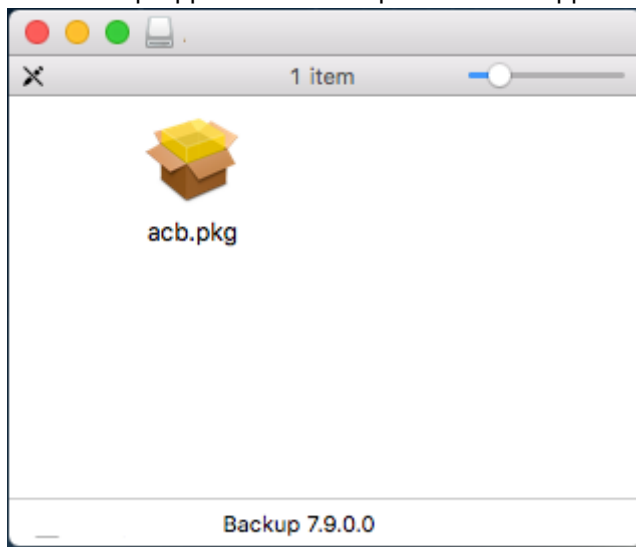


Install Backup App

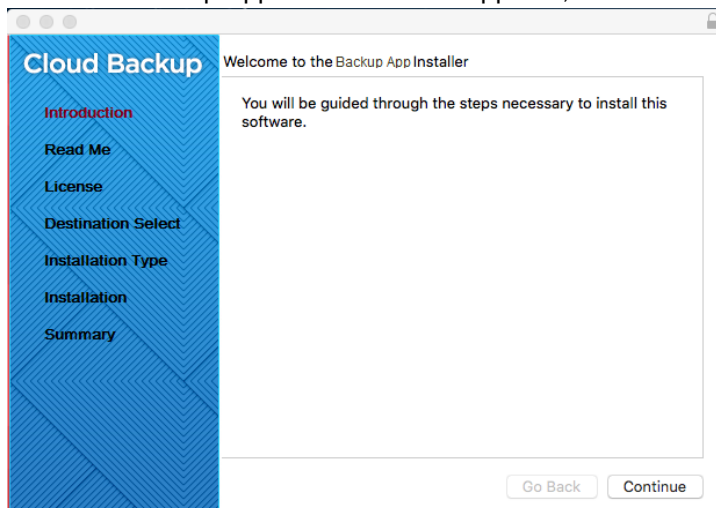
1. Double-click the icon of the Backup App installation package **.dmg** file you have downloaded.



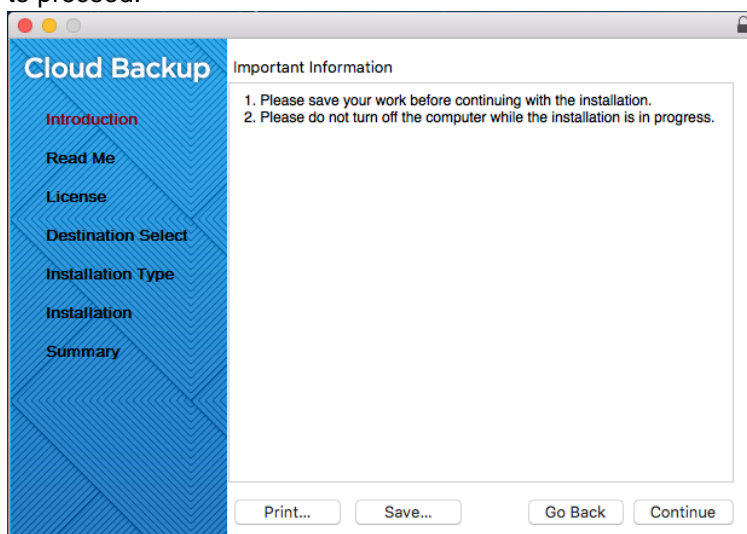
2. The Backup App A-Click Backup window will appear. You will see another file named **acb.pkg**.



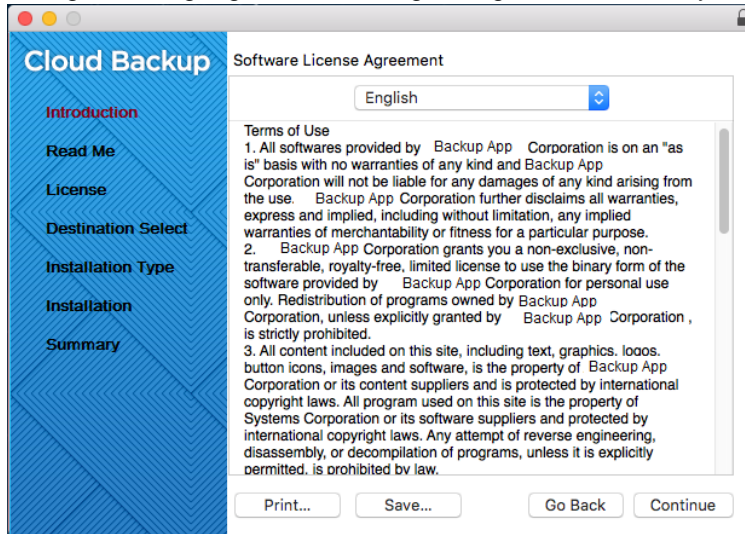
3. When the Backup App Installer wizard appears, click **Continue** to proceed.



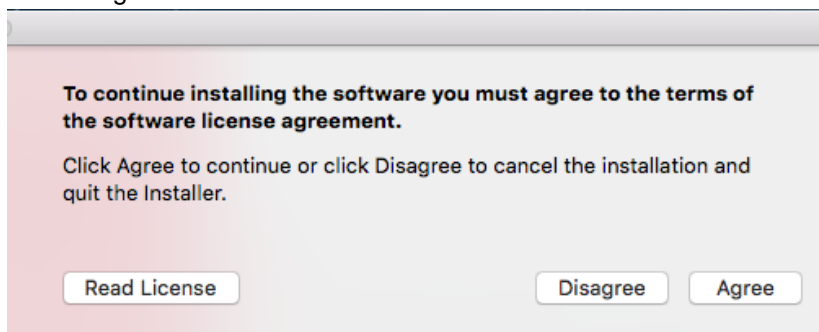
4. When the Important Information screen appears, read the information and then click **Continue** to proceed.



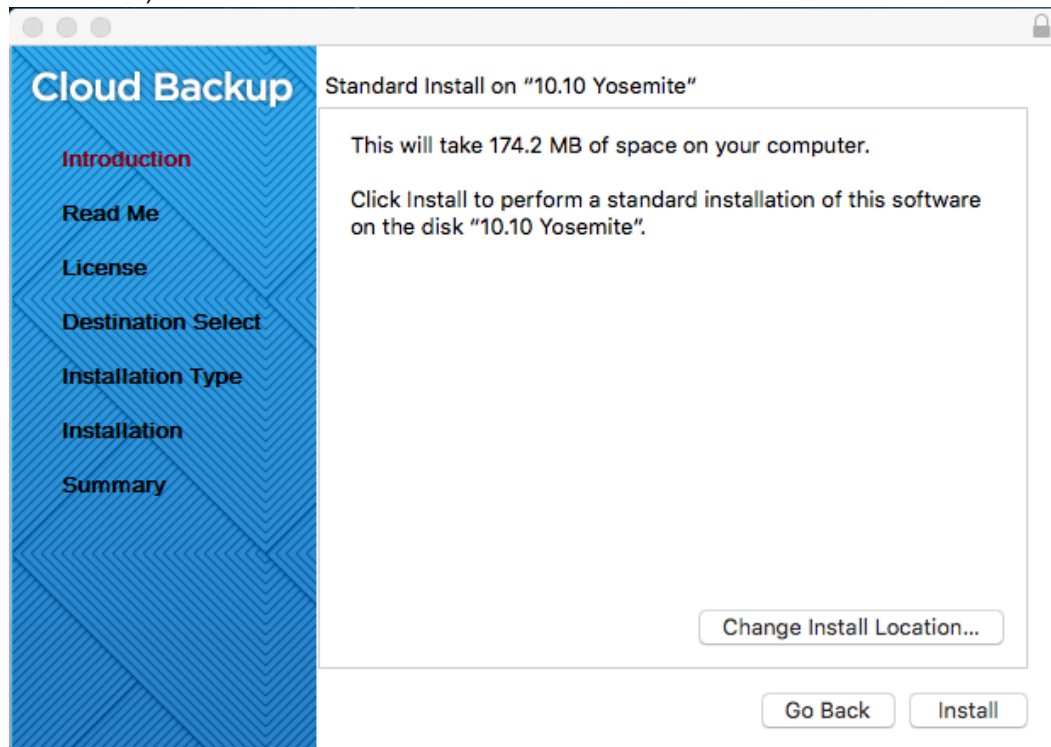
5. When the Software License Agreement appears, the agreement content will be displayed in English by default. If you prefer to read it in a different language, click the dropdown menu to change the language. After reading the agreement carefully, click **Continue** to proceed.



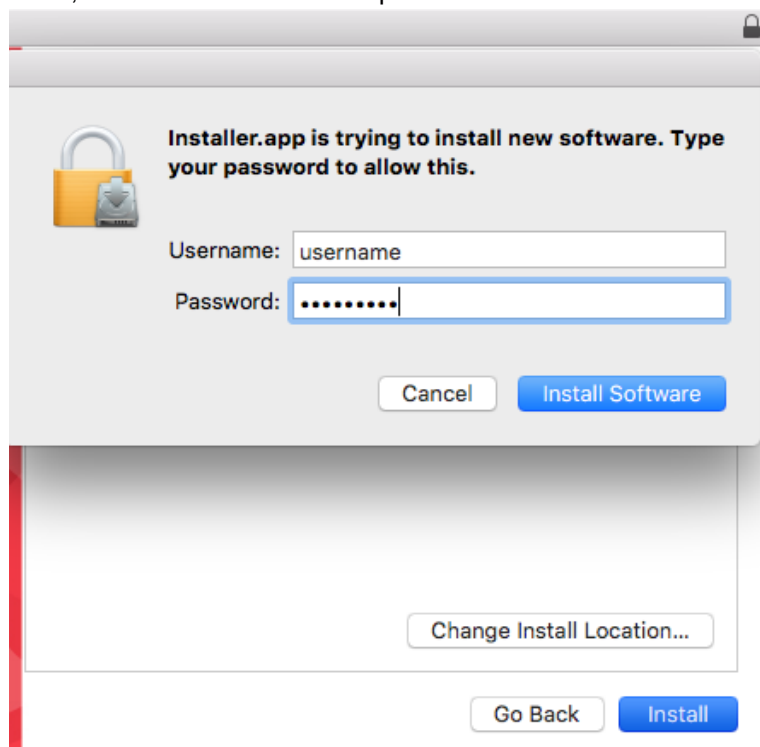
6. The following message will appear in a pop-up window. Click **Agree** to accept the software license agreement.



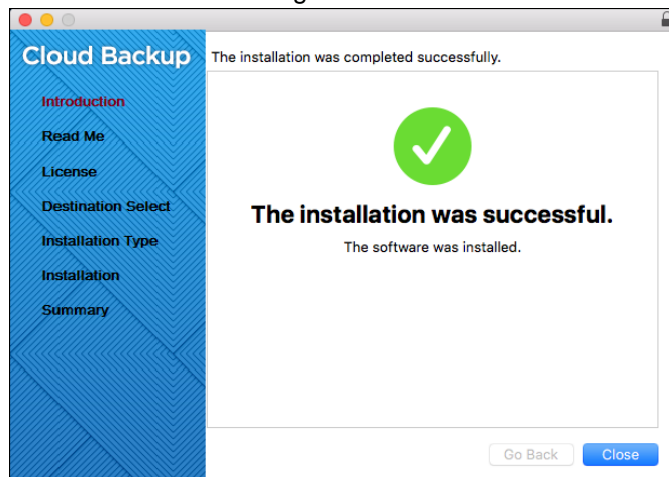
- Click **Install** to start installing Backup App to the default location, i.e. "10.10 Yosemite" in this example. (Alternatively, you can click **Change Install Location...** to choose a different destination.)



- The following message will appear in a pop-up window. Enter your Mac OS X login credentials. Then, click **Install Software** to proceed with the installation.



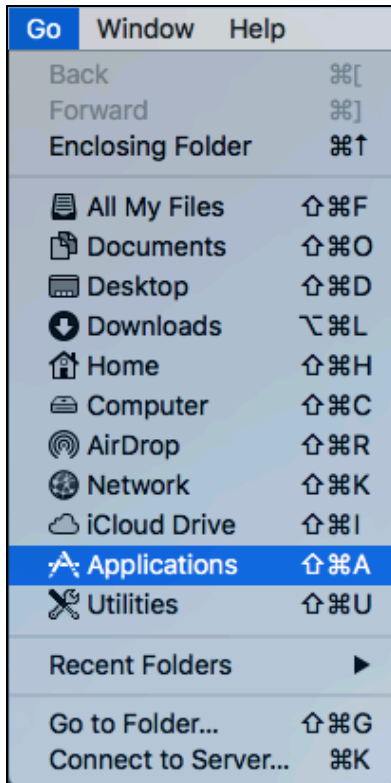
9. You will see the following screen when the installation of Backup App is completed.



4 Start Backup App

Add an Backup App Shortcut Icon to the Desktop

1. Under the **Go** menu bar on the top of the screen, click the **Applications** option.



2. Look for the Backup App application icon as shown below.



3. Then, drag the Backup App icon to add a shortcut to the desktop.

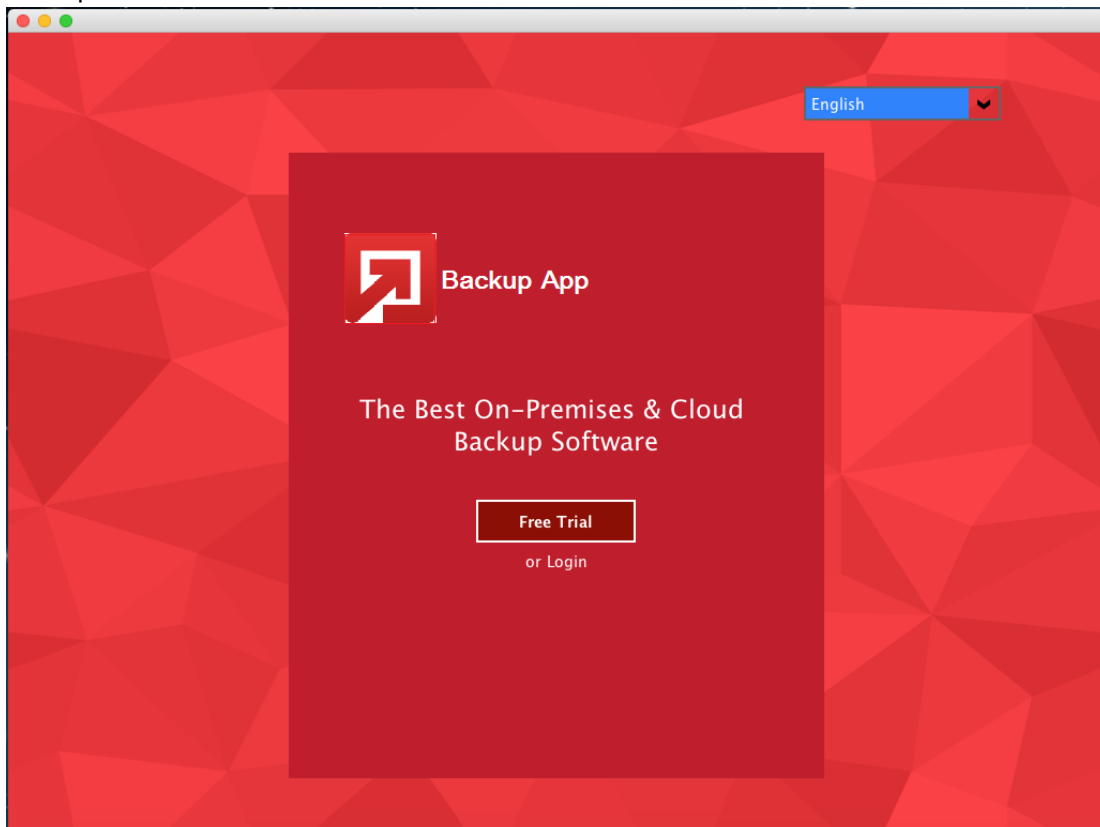


Login to Backup App

1. Double-click the **Backup App** icon to launch the application.



2. The Free Trial Registration menu may be displayed when you log in for the first time. Click **Login** if you already have a Backup App account, or click **Free Trial** to register for a trial backup account.



3. In case you want to enter the backup server setting provided by your backup service provider, click **Show advanced option** to enter the backup server settings provided by your backup service provider.

Backup Server

http

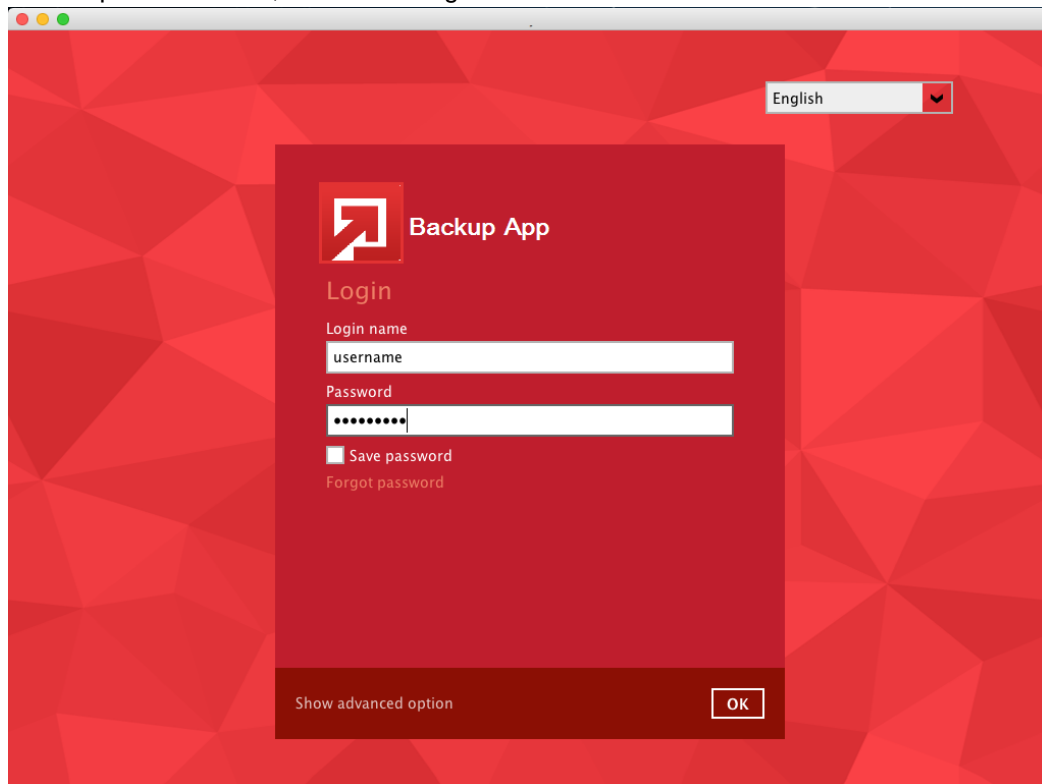
10.23.6.91

Proxy (HTTP)

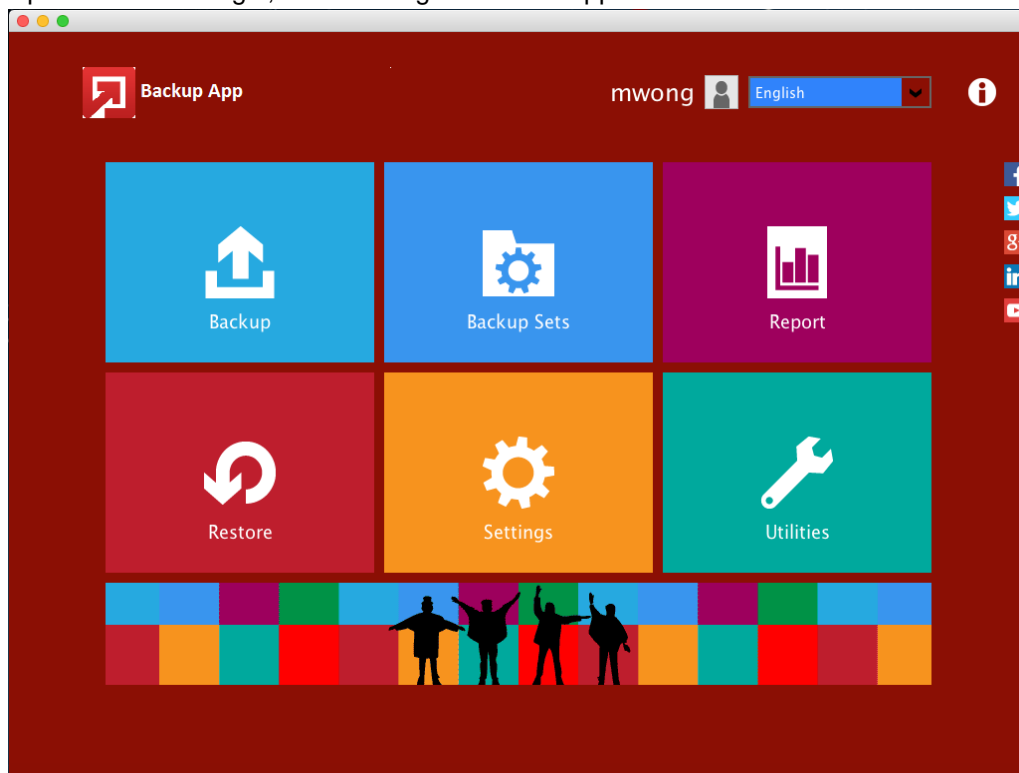
Use proxy to access the Internet

Off ☐

4. Enter the login name and password of your Backup App account provided by your backup service provider. Then, click **OK** to login.

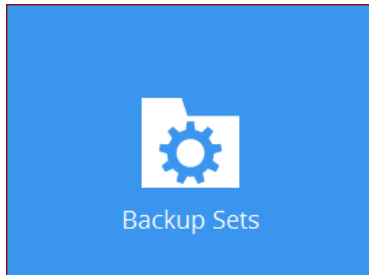


5. Upon successful login, the following screen will appear.

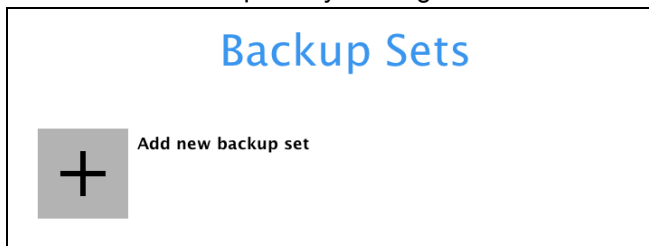


5 Create a Backup Set

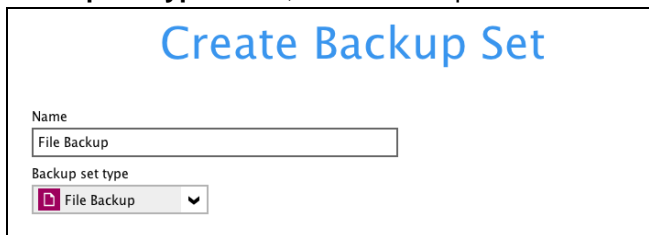
1. Click the **Backup Sets** icon on the main interface of Backup App.



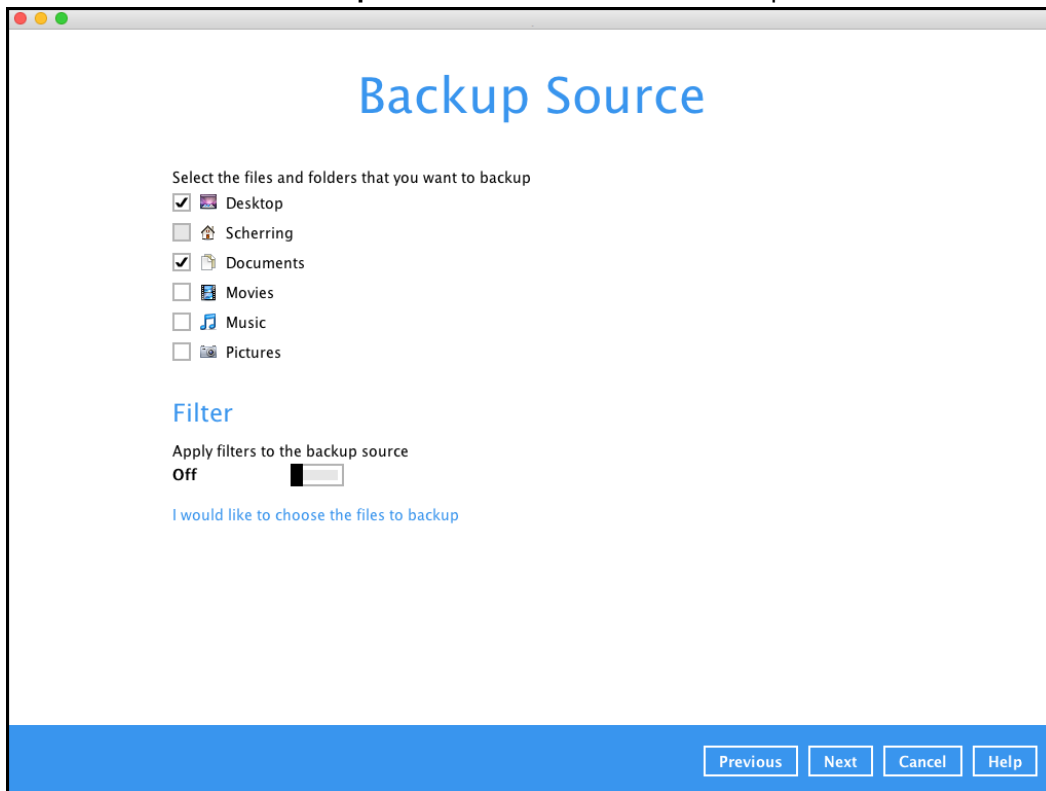
2. Create a new backup set by clicking the "+" icon next to **Add new backup set**.



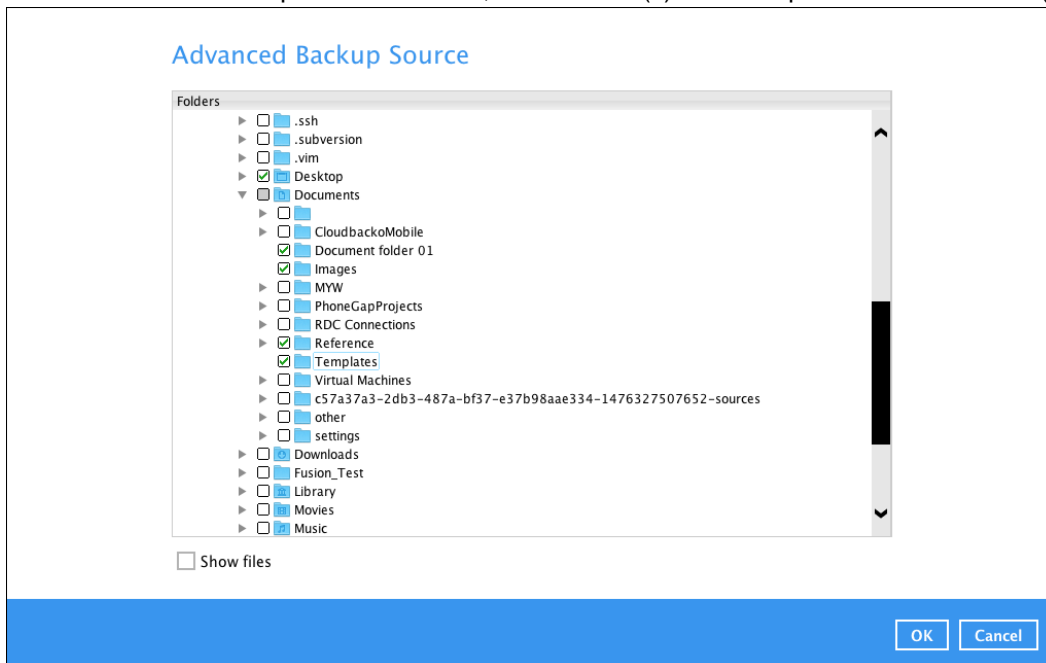
3. When the Create Backup Set window appears, name your new backup set and select the **Backup set type**. Then, click **Next** to proceed.

A window titled "Create Backup Set" in blue text. Below the title, there is a text input field labeled "Name" with the text "File Backup" entered. Below the input field, there is a label "Backup set type" followed by a dropdown menu. The dropdown menu is open, showing a list with "File Backup" selected and a small downward arrow icon.

4. In the Backup Source window, select the source files and folders for backup. Click **I would like to choose the files to backup** to select individual files for backup.

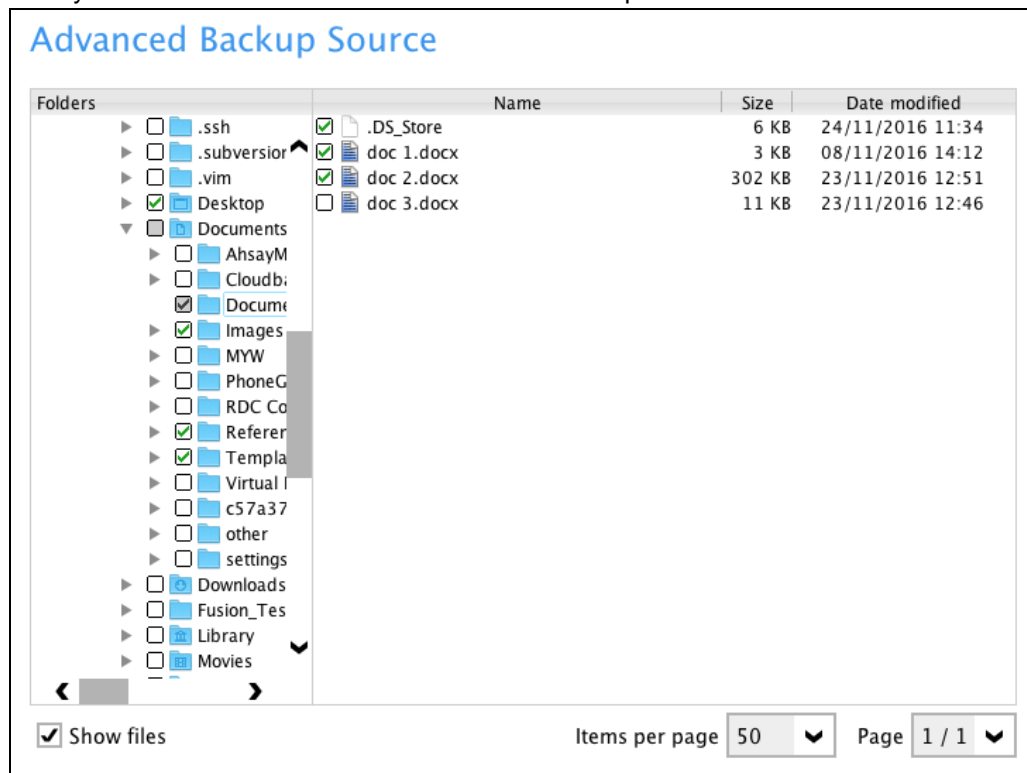


5. In the Advanced Backup Source window, select folder(s) to back up all files in the folder(s).

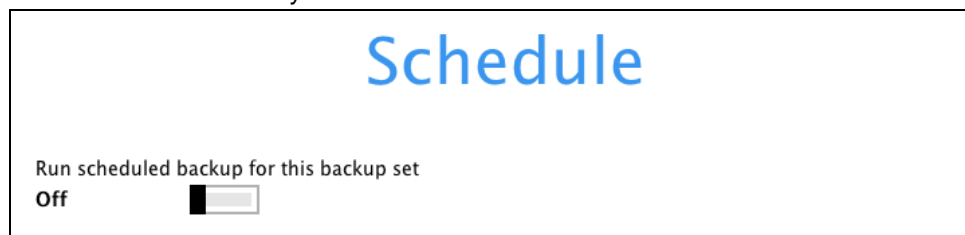


6. Alternatively, if you want to back up only specific files instead of all files in your selected folder(s), select the **Show files** checkbox at the bottom of the screen. A list of files will appear on the right hand side. Select the checkbox(es) next to the file(s) to back up. Then, click **OK** to

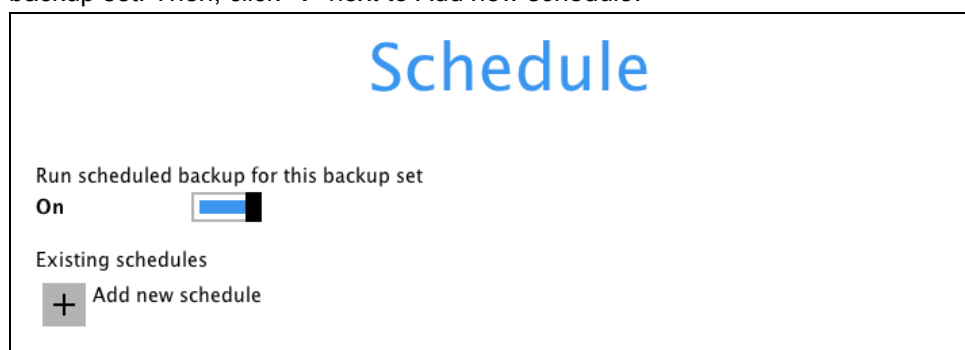
save your selections and close the Advanced Backup Source window.



7. In the Backup Source window, click **Next** to proceed.
 8. When the Schedule window appears, you can configure a backup schedule to automatically run a backup job at your specified time interval.
 9. In the Schedule window, the Run scheduled backup for this backup set is **Off** by default.
- You can leave it as is if you want to add a schedule later.

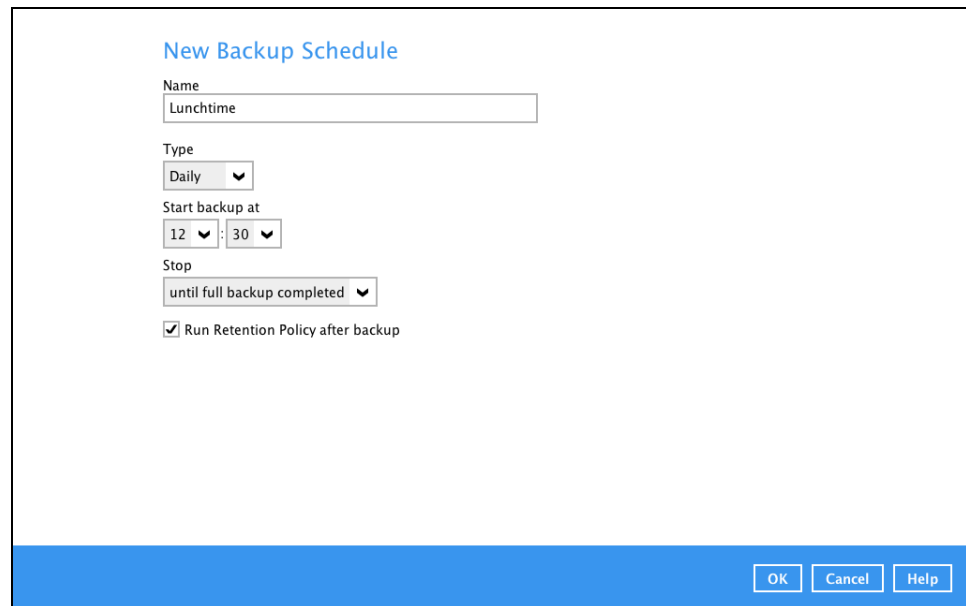


- If you want to add a schedule now, switch **On** Run scheduled backup for this backup set. Then, click “+” next to Add new schedule.



When the New Backup Schedule window appears, specify your backup schedule.

Then, click **OK** to save your changes and close the New Backup Schedule window.

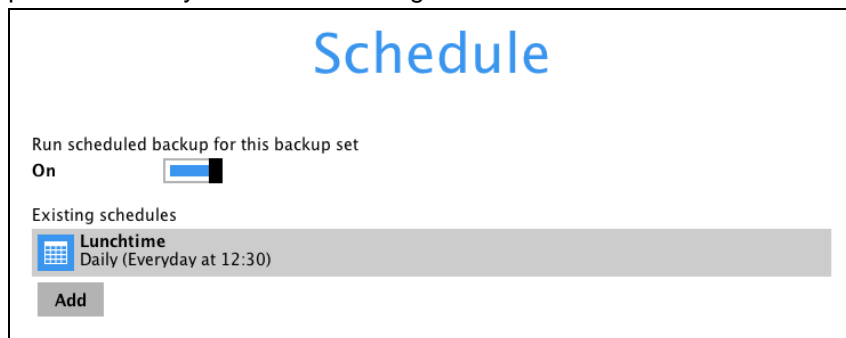


The 'New Backup Schedule' dialog box contains the following fields and controls:

- Name:** A text input field containing 'Lunchtime'.
- Type:** A dropdown menu with 'Daily' selected.
- Start backup at:** Time selection fields showing '12' for the hour and '30' for the minutes.
- Stop:** A dropdown menu with 'until full backup completed' selected.
- Run Retention Policy after backup:** A checked checkbox.
- Buttons:** 'OK', 'Cancel', and 'Help' buttons at the bottom right.

Note: For details about the options from the dropdown menus, please refer to chapter 7 [Configure Backup Schedule for Automated Backup](#).

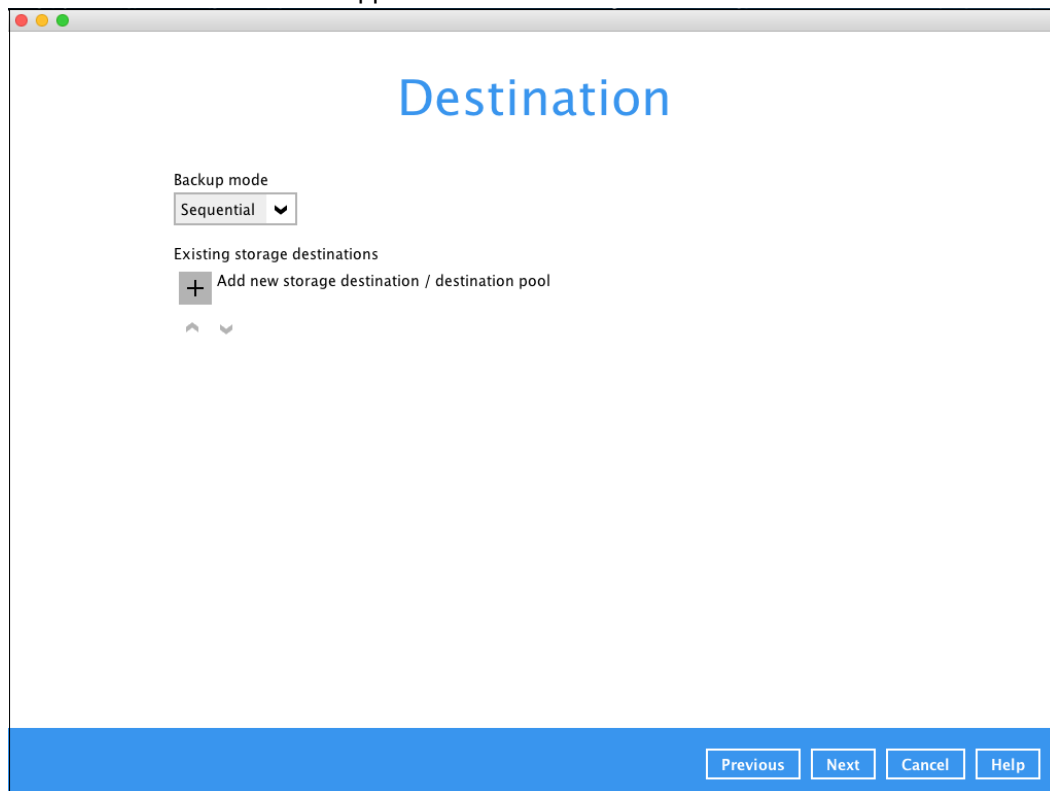
10. In case you have added a schedule, it will be shown in the Schedule window. Click **Next** to proceed when you are done setting.



The 'Schedule' window displays the following information:

- Run scheduled backup for this backup set:** A toggle switch set to 'On'.
- Existing schedules:** A list showing one schedule: 'Lunchtime' with a calendar icon and the description 'Daily (Everyday at 12:30)'.
- Add:** A button to add a new schedule.

11. The Destination window will appear.



Select the appropriate option from the **Backup mode** dropdown menu.

- ☒ **Sequential** (default value) – run backup jobs to each backup destination one by one
- ☐ **Concurrent** – run backup jobs to all backup destinations at the same time

To select a backup destination for the backup data storage, click the “+” icon next to **Add new storage destination / destination pool**.

12. In the New Storage Destination / Destination Pool window, select the destination type and destination storage. Then, click **OK** to confirm your selection.

New Storage Destination / Destination Pool

Name
CBS

Type
☒ Single storage destination
☐ Destination pool

Destination storage
CBS

OK Cancel Help

13. In the Destination window, your selected storage destination will be shown. Click **Next** to proceed.

Destination

Backup mode
Sequential

Existing storage destinations
CBS
Host: 10.3.1.8:443

Add

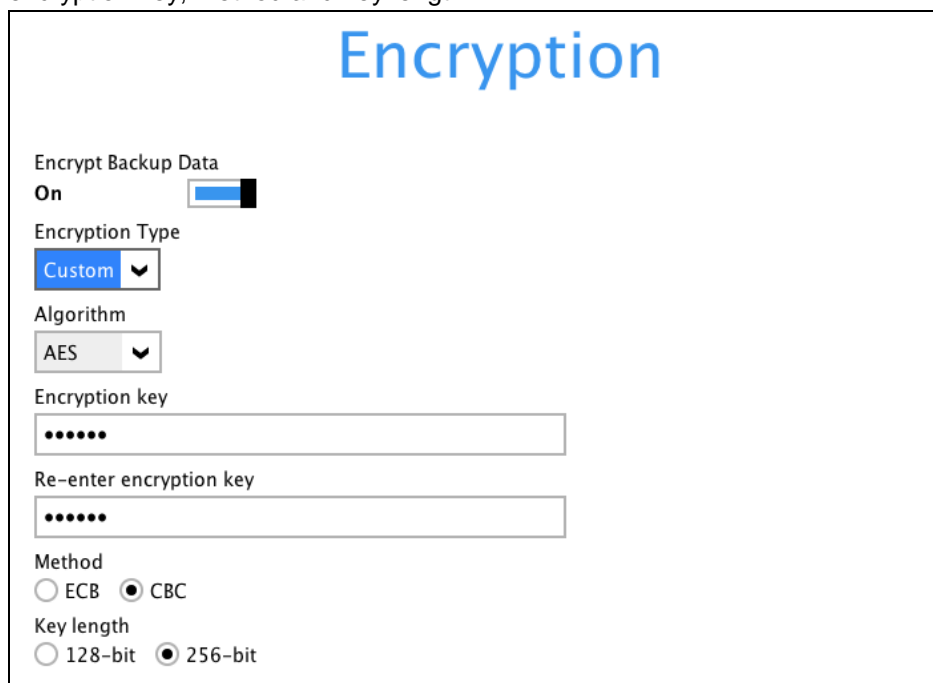
^ v

14. In the Encryption window, the default **Encrypt Backup Data** option is enabled with an encryption key preset by the system which provides the most secure protection.



You can choose from one of the following three Encryption Type options:

- **Default** – an encryption key with 44 alpha numeric characters will be randomly generated by the system
- **User password** – the encryption key will be the same as the login password of your Backup App at the time when this backup set is created. Please be reminded that if you change the Backup App login password later, the encryption keys of the backup sets previously created with this encryption type will remain unchanged.
- **Custom** – you can customize your encryption key, where you can set your own algorithm, encryption key, method and key length.



Click **Next** when you are done setting.

15. If you have enabled the Encryption Key feature in the previous step, the following pop-up window shows, no matter which encryption type you have selected.



The image shows a dark-themed pop-up window titled "Encryption". It contains two settings: "Encrypt Backup Data" which is turned "On" with a slider, and "Encryption Type" set to "Default" with a dropdown arrow. Below these settings is a blue section with white text advising the user to write the encryption key down on paper and keep it in a safe place. A text input field shows six dots. Below the field is a link "Unmask encryption key". At the bottom right are two buttons: "Copy to clipboard" and "Confirm".

Encryption

Encrypt Backup Data
On ☐

Encryption Type
Default ▾

You are advised to write this encryption key down on paper and keep it in a safe place. You will need it when you need to restore your files later. Please confirm that you have done so.

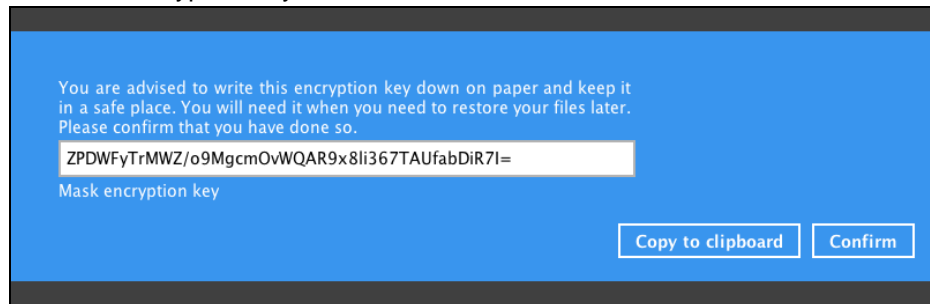
•••••

[Unmask encryption key](#)

[Copy to clipboard](#) [Confirm](#)

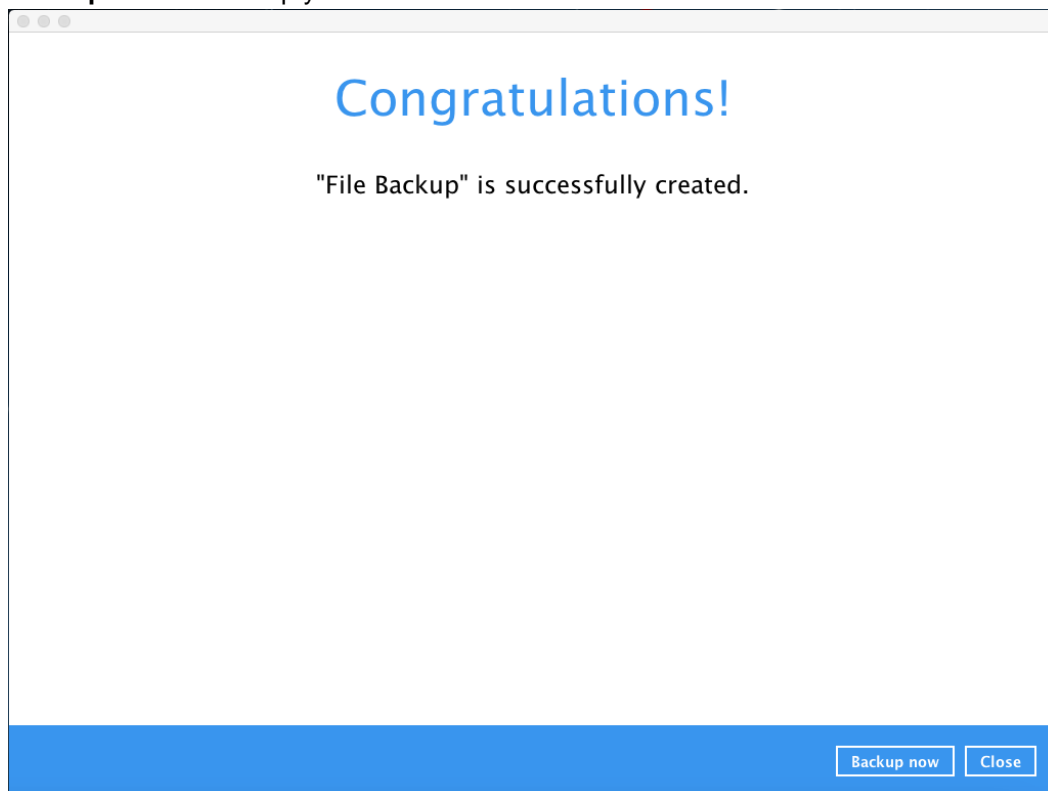
The pop-up window has the following three options to choose from:

- **Unmask encryption key** – The encryption key is masked by default. Click this option to show the encryption key.



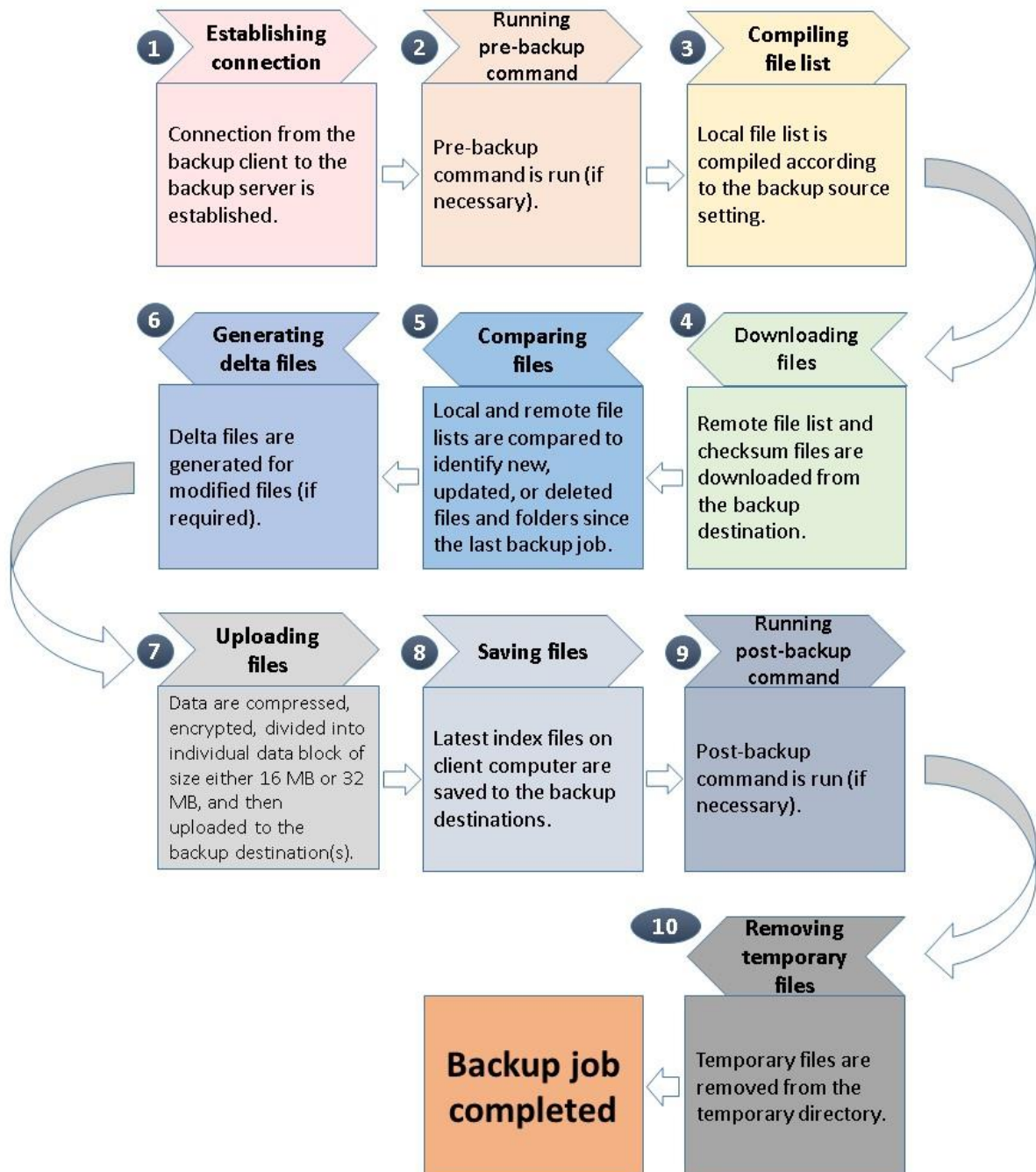
- **Copy to clipboard** – Click to copy the encryption key, then you can paste it in another location of your choice.
- **Confirm** – Click to exit this pop-up window and proceed to the next step.

16. Upon successful creation of the backup set, the following screen will appear. You can click **Backup now** to back up your data or click **Close** to exit.



6 Overview on Backup Process

The following steps are performed during a backup job:



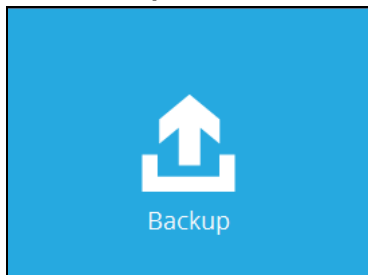
7 Run Backup Jobs

Login to Backup App

Login to the Backup App application according to the instructions in chapter 4 [Login to Backup App](#).

Start a Manual Backup

1. Click **Backup** on the main interface of Backup App.



2. Select the backup set that you would like to create a backup schedule for. In case you want to modify the In-File Delta type, Destinations and Retention Policy settings, click **Show advanced option**.



Please Select The Backup Set To Backup



File Backup
Owner: Scherrings-Mac-mini
Last Backup: Thursday, 24 November 2016 15:11



3. When advanced options are shown, it is recommended that you tick the checkbox next to **Run Retention Policy after backup** in the Retention Policy section at the bottom. This will help you save hard disk quota in the long run. In the In-File Delta type section, the following three options are available:

Backup set type
File

In-File Delta type

☒ Full
☐ Differential
☐ Incremental

Destinations

☒ CBS (Host: 10.3.1.8:443)

Retention Policy

☒ Run Retention Policy after backup

[Hide advanced option](#)

- **Full** – A full backup captures all the data that you want to protect. When you run a backup job for the first time, Backup App will run a full backup regardless of the in-file delta setting.
- **Differential** – A differential backup captures only the changes made as compared with the last uploaded full file only (i.e. changes since the last full backup, not since the last differential backup).
- **Incremental** – An incremental backup captures only the changes made as compared with the last uploaded full or delta file (i.e. changes since the last incremental backup).

4. Click **Backup** to start the backup job. The status will be shown.

CBS (Host: 10.3.1.8:443)

Downloading server file list... Completed


Estimated time left 0 sec
Backed up 0 (0 file, 0 directory, 0 link)
Elapsed time 2 sec
Transfer rate 0bit/s

5. When the backup is completed, the progress bar will be green in color and the message "Backup Completed Successfully" will appear.























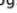

CBS (Host: 10.3.1.8:443)

✓ Backup Completed Successfully

Estimated time left 0 sec
Backed up 18.62k (6 files, 0 directory, 0 link)
Elapsed time 12 sec
Transfer rate 4.29kbit/s

6. You can click the  **View** icon on the right hand side to check the log. A window will pop up to show the log. Close the pop-up window when you finish reading it.

Show All ▼

Type	Log	Time
	Start [Mac OS X 10.11.1 (Scherrings-Mac-mini), BackupApp v7.9.0.0]	24/11/2016 15:12:17
	Saving encrypted backup set encryption keys to server...	24/11/2016 15:12:23
	Start Backup ... [In-File Delta: Full]	24/11/2016 15:12:23
	Using Temporary Directory /Users/Scherring/temp/1479952176042/OBS@1479970446499	24/11/2016 15:12:23
	Downloading server file list...	24/11/2016 15:12:23
	Downloading server file list... Completed	24/11/2016 15:12:27
	Reading backup source from hard disk...	24/11/2016 15:12:30
	Reading backup source from hard disk... Completed	24/11/2016 15:12:30
	[New Directory]... /	24/11/2016 15:12:30
	[New Directory]... /Users	24/11/2016 15:12:30
	[New Directory]... /Users/Scherring	24/11/2016 15:12:30
	[New Directory]... /Users/Scherring/Desktop	24/11/2016 15:12:30
	[New Directory]... /Users/Scherring/Documents	24/11/2016 15:12:30
	[New Directory]... /Users/Scherring/Documents/Document folder 01	24/11/2016 15:12:31
	[New Directory]... /Users/Scherring/Documents/Templates	24/11/2016 15:12:31
	[New Directory]... /Users/Scherring/Documents/Reference	24/11/2016 15:12:31
	[New Directory]... /Users/Scherring/Documents/Images	24/11/2016 15:12:31
	[New Directory]... /Users/Scherring/Desktop/=====	24/11/2016 15:12:31
	[New Directory]... /Users/Scherring/Desktop/=====Scherring	24/11/2016 15:12:31
	[New Directory]... /Users/Scherring/Desktop/=====Scherring/Desktop	24/11/2016 15:12:31
	[New Directory]... /Users/Scherring/Desktop/=====Scherring/Desktop/Sample_Test_Data	24/11/2016 15:12:31
	[New Directory]... /Users/Scherring/Desktop/=====Scherring/Desktop/Sample_Test_Data/Internationalization	24/11/2016 15:12:31
	[New Directory]... /Users/Scherring/Desktop/=====Scherring/Desktop/Sample_Test_Data/Internationalization/Intè...	24/11/2016 15:12:31
	[New Directory]... /Users/Scherrina/Desktop/CBK Mobile App Certs	24/11/2016 15:12:31

Logs per page 50 ▼
Page 1 / 4 ▼

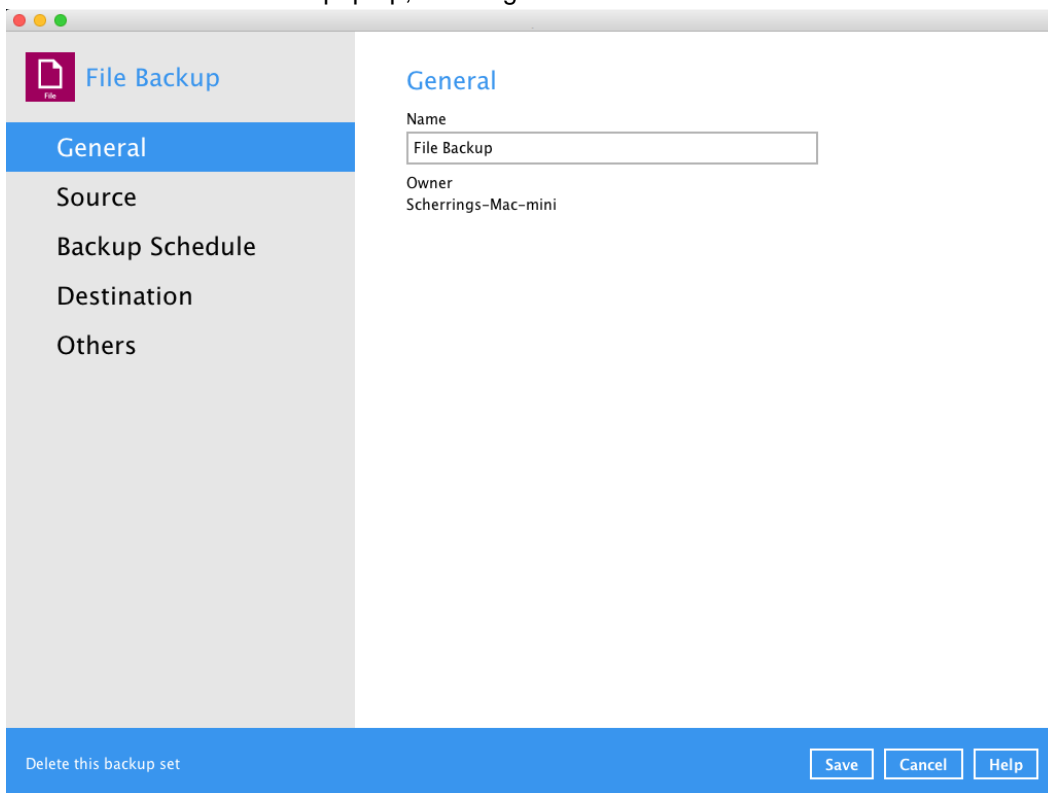
Close

Configure Backup Schedule for Automated Backup

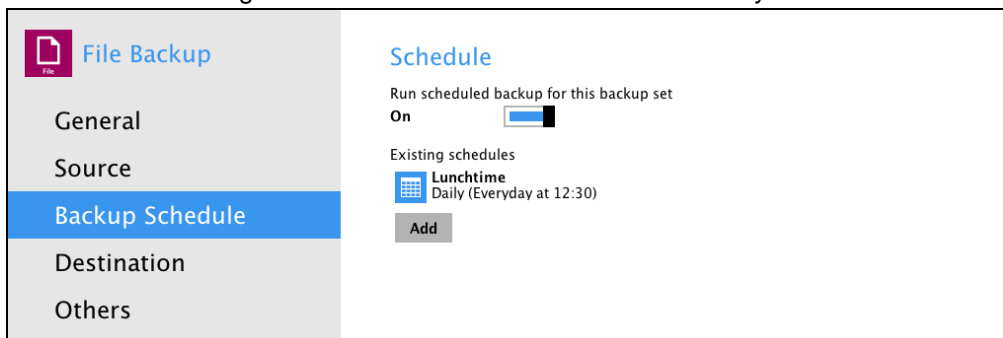
1. Click **Backup Sets** on the Backup App main interface.



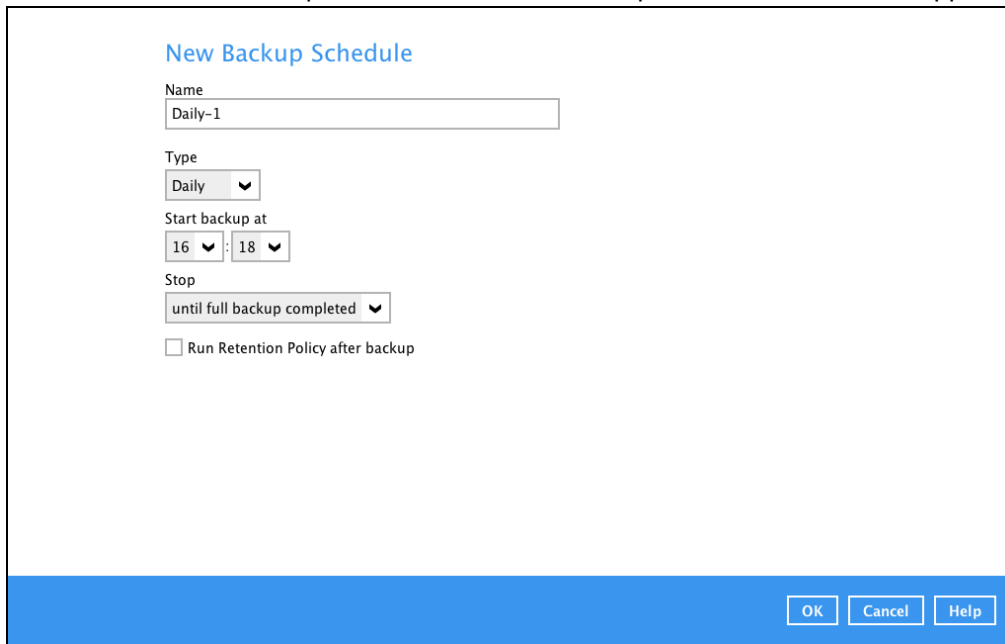
2. All backup sets will be listed. Select the backup set that you would like to create a backup schedule for. A screen will pop up, showing the General tab.



3. Go to the **Backup Schedule** tab. In case Run scheduled backup for this backup set is off, switch it **On**. Existing schedules will be listed at the bottom if any.



4. Click **Add** to add a backup schedule. The New Backup Schedule window will appear.



New Backup Schedule

Name
Daily-1

Type
Daily

Start backup at
16 : 18

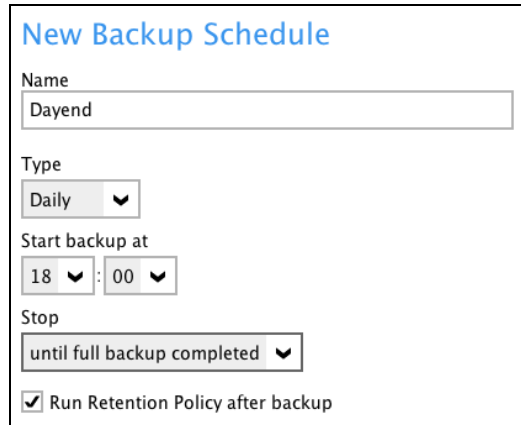
Stop
until full backup completed

☐ Run Retention Policy after backup

OK Cancel Help

5. In the New Backup Schedule window, you can configure your backup schedule settings. To save hard disk quota in the long run, it is recommended that you tick the checkbox next to **Run Retention Policy after backup** at the bottom. The rest of the setting options will vary by which option you choose from the **Type** dropdown menu:

• **Daily** – when to start the backup job



New Backup Schedule

Name
Dayend

Type
Daily

Start backup at
18 : 00

Stop
until full backup completed

☒ Run Retention Policy after backup

- **Weekly** – which day of the week and what time that day to start the backup job

New Backup Schedule

Name
Weekend

Type
Weekly

Backup on these days of the week
☐ Sun ☐ Mon ☐ Tue ☐ Wed ☐ Thu ☐ Fri ☒ Sat

Start backup at
23 : 00

Stop
until full backup completed

☒ Run Retention Policy after backup

- **Monthly** – which day of the month and what time that day to start the backup job

New Backup Schedule

Name
Monthly Closing

Type
Monthly

Backup on the following day every month
☒ Day Last
☐ First Sunday

Start backup at
23 : 59 on the selected days

Stop
until full backup completed

☒ Run Retention Policy after backup

- **Custom** – which particular date to start a one-off backup job

New Backup Schedule

Name
New Year Eve

Type
Custom

Backup on the following day once
2016 December 31

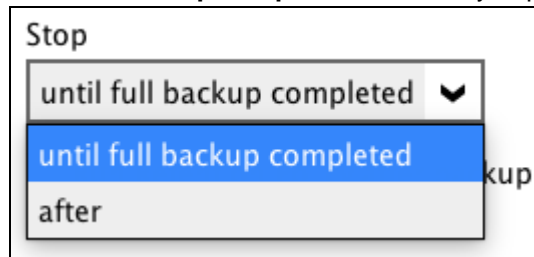
Start backup at
23 : 59

Stop
until full backup completed

☒ Run Retention Policy after backup

The **Stop** dropdown menu offers two options:

- ⦿ **until full backup completed** – in case you prefer a complete backup



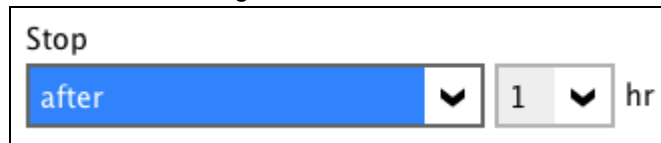
Stop

until full backup completed ▼

until full backup completed

after

- ⦿ **after [how many] hr** – in case you prefer the backup job to stop after a certain number of hours regardless of whether or not the backup job is complete

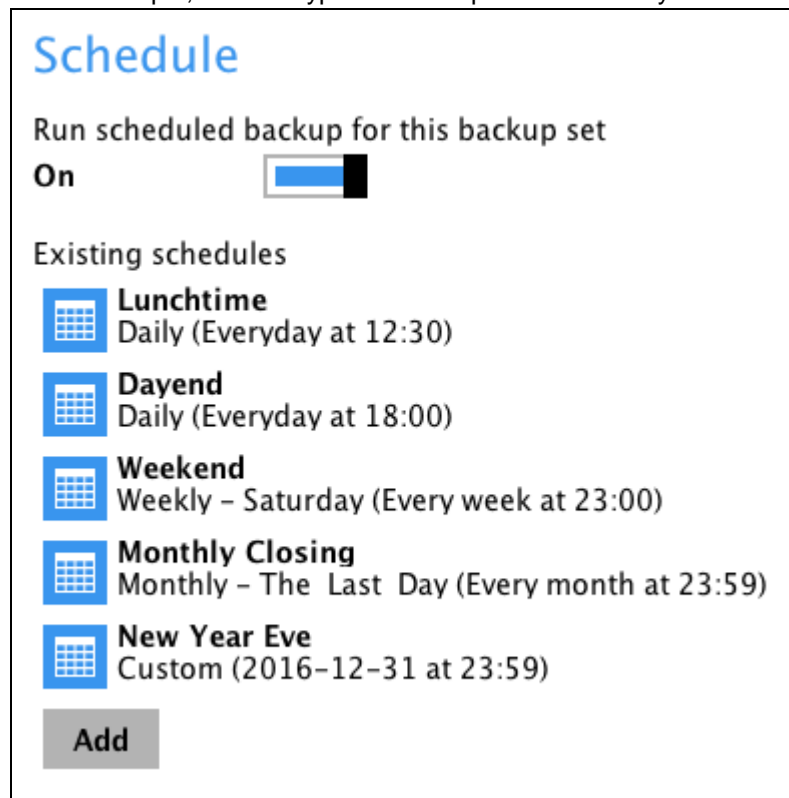


Stop

after ▼

1 ▼ hr

As an example, the four types of backup schedules may look like the following.








Schedule

Run scheduled backup for this backup set

On ☐

Existing schedules

-  **Lunchtime**
Daily (Everyday at 12:30)
-  **Dayend**
Daily (Everyday at 18:00)
-  **Weekend**
Weekly – Saturday (Every week at 23:00)
-  **Monthly Closing**
Monthly – The Last Day (Every month at 23:59)
-  **New Year Eve**
Custom (2016-12-31 at 23:59)

Add

6. Click **Save** to confirm your settings. Then, click **Close** to exit Backup Sets.

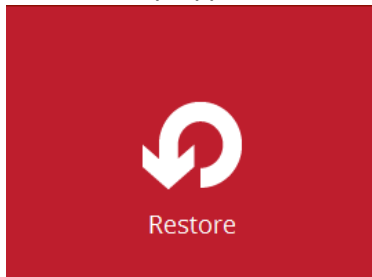
8 Restore Data

Login to Backup App

Login to the Backup App application according to the instructions in section [4.2 Login to Backup App](#).

Restore Data

1. In the Backup App main interface, click the **Restore** icon.



2. Select the backup set that you would like to restore data from.



Please Select The Backup Set To Restore

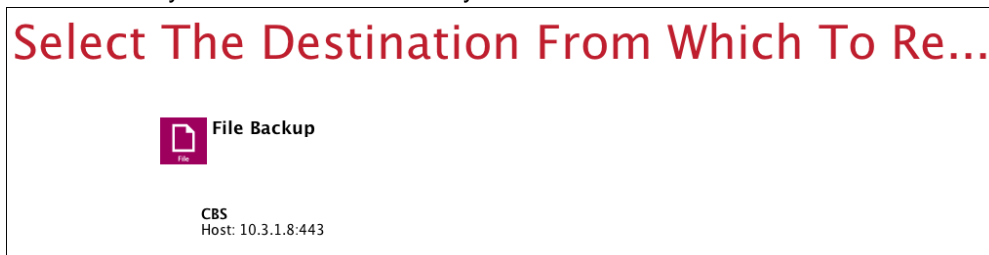


File Backup

Owner: Scherrings-Mac-mini
Last Backup: Thursday, 24 November 2016 17:24



3. Select where you would like to restore your data from.



4. Select to restore files from a specific backup job, or from all files available. Then, select the files or folders that you would like to restore.

There are two options from the **Select what to restore** drop-down menu:

- **Choose from files as of job** – This option allows you to select a backup version from a specific date and time to restore.

Select what to restore

Choose from files as of job ▼ 24/11/2016 ▼ Latest ▼

Choose from files as of job

Choose from ALL files

Name

Select what to restore

Choose from files as of job ▼ 24/11/2016 ▼ Latest ▼

Show filter

Folders

CBS

/

24/11/2016

23/11/2016

22/11/2016

Select what to restore

Choose from files as of job ▼ 24/11/2016 ▼ Latest ▼

Show filter

Folders

CBS

/

Users

Latest

10:52

10:49

09:43

Name

- **Choose from ALL files** – This option allows you to restore all the available backup versions for this backup set. Among all the available backup versions, you can even select only some of the backup versions of a file to restore.

Select Your Files To Be Restored

Select what to restore

Choose from ALL files ▼

Show filter

Folders	Name	Size	Date modified
CBS	File 1.rtf	449 b...	25/11/2016 09:47
/	File 1.rtf	439 b...	25/11/2016 09:45
Users	File 1.rtf	430 b...	25/11/2016 09:42
Scherring	File 1.rtf	426 b...	25/11/2016 09:34
Desktop			
Documents			
Files 01			
MYW			

The following is an example showing all the available backup versions of the file **File 1.rtf**. The latest version is shown in solid black color and all the previous versions are shown in grey color. You can identify the file version from the **Date**

modified column.

	Name	Size	Date modified
<input type="checkbox"/>	File 1.rtf	449 b...	25/11/2016 09:47
<input type="checkbox"/>	File 1.rtf	439 b...	25/11/2016 09:45
<input type="checkbox"/>	File 1.rtf	430 b...	25/11/2016 09:42
<input type="checkbox"/>	File 1.rtf	426 b...	25/11/2016 09:34

When the restore is done, you will see all the selected backup versions in the restore destination. The latest backup version has the file name as the original file, while the previous versions have the time stamps added to their file names for easy identification.

<< Common ▶ KMT ▶ Steven ▶ Others ▶ File Snapshot			
	Name		Date modified
	File snapshot testing		11/7/2016 6:54 PM
	File snapshot testing_2016-11-07-18-39-11		11/7/2016 6:39 PM
	File snapshot testing_2016-11-07-18-51-55		11/7/2016 6:51 PM
	File snapshot testing_2016-11-07-18-53-26		11/7/2016 6:52 PM

5. Click **Next** to proceed when you are done with the selections.
6. Select to restore the files to their **Original location**, or to an **Alternate location**. Then, click **Next** to proceed.
 - **Original location** – the backed up data will be restored to the computer running the Backup App under the same directory path as on the machine storing the backup source. For example, if the backup source files are stored under **Users/[User's Name]/Downloads** folder, the data will be restored to **Users/[User's Name]/Downloads** as well on the computer running the Backup App.

Choose Where The Files To Be Restored

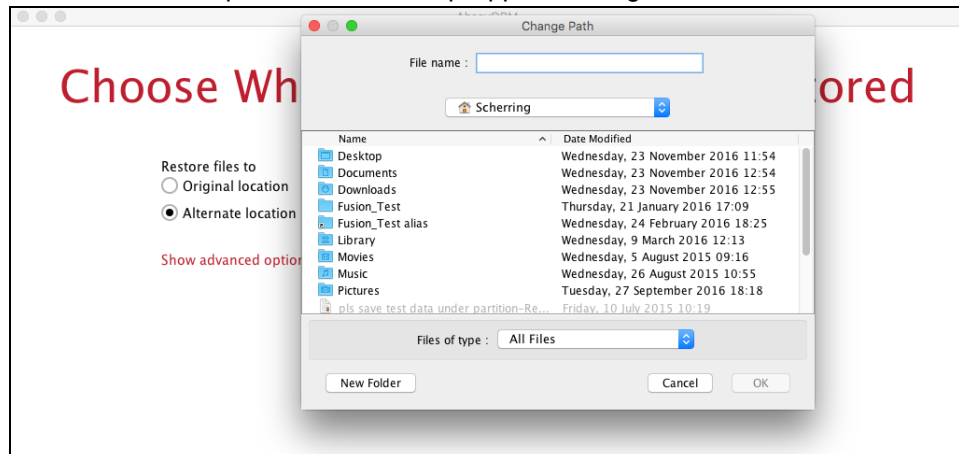
Restore files to

☒ Original location

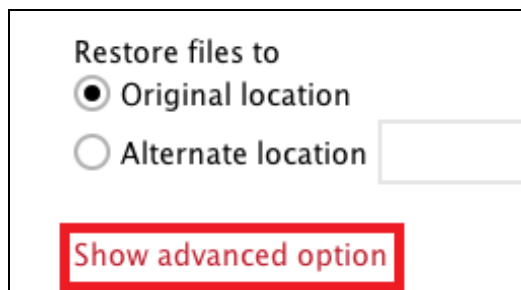
☐ Alternate location

Show advanced option

- **Alternate location** – you can choose to restore the data to a location of your choice on the computer where Backup App is running.



- Click **Show advanced option** to configure other restore settings:

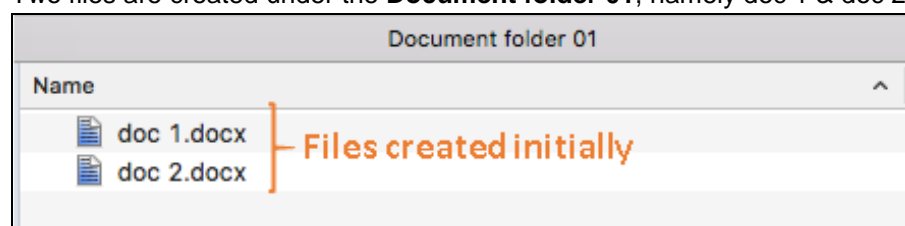


- **Delete extra files**

By enabling this option, the restore process will attempt to synchronize the selected restore source with the restore destination, making sure the data in the restore destination is exactly the same as the restore source. Any data created after backup will be treated as “extra files” and will be deleted from the restore source if this feature is enabled.

Example:

- Two files are created under the **Document folder 01**, namely doc 1 & doc 2.



- A backup is performed for folder **Document folder 01**.

- iii) Two new files are created, namely doc 3 & doc 4.

Document folder 01	
Name	
doc 1.docx	Files created BEFORE backup
doc 2.docx	
doc 3.docx	Files created AFTER backup
doc 4.docx	

- iv) A restore is performed for the **Document folder 01**, with **Delete extra files** option enabled.
- v) Since doc 3 & doc 4 have never been backed up, therefore they will be deleted from **Document folder 01**, leaving only the two files that have been backed up.

Document folder 01	
Name	
doc 1.docx	Files remain after restore
doc 2.docx	

WARNING

Please exercise extra caution when enabling this feature. Consider what data in the restore source has not been backed up and what impact it would cause if those data is deleted.

Prior to the data restore and synchronization, a warning message shows as the one shown below. Only clicking **Yes** will the “extra file” be deleted. You can click **Apply to all** to confirm deleting all the “extra files” at a time.

⦿ Follow Link (Enabled by default)

When this option is enabled, not only the symbolic link or junction point will be restored, the directories and files that the symbolic link or junction point links to will also be restored.

The table below summarizes the behaviors when a restore is performed with different settings.

Follow Link	Restore to	Behavior
Enabled	Original location	Symbolic link or junction point is restored to the original backup location. Target directories or files are also restored to the original backup location.
	Alternate location	Symbolic link or junction point is restored to the location specified. Target directories or files are also restored to

		the alternate location specified.
Disabled	Original location	Symbolic link or junction point is restored to the original backup location. Target directories or files are NOT restored to the original backup location.
	Alternate location	Symbolic link or junction point is restored to the location specified. Target directories or files are NOT restored to the alternate location specified.

• **Resolve Link (Only for restoring to Alternate Location)**

This option must be used in conjunction with the **Follow Link** option. When this option is enabled, the symbolic link or junction point, as well as the directories and files that the symbolic link or junction point links to will also be restored in the alternate location you have chosen. That means the link or junction will point to the alternate location instead of the original location.

The table below summarizes the behaviors when a restore is performed with this option turned on and off.

Resolve Link	Behavior
Enabled	Symbolic link or junction point is restored to the alternate location specified, with its target directories and files also restored to the same location in their relative path. Target of the link or junction is updated to the new relative path. In other word, the link or junction now points to the new alternate location.
Disabled	Symbolic link or junction point is restored to the alternate location specified, with its target directories and files also restored to the same location in their relative path. However, target of the link or junction is NOT updated to the new relative path. In other word, the link or junction still points to the original location.

- Click **Next** to proceed when you are done with the settings.
- Select the temporary directory for storing temporary files, such as delta files, when they are being merged.

By default, the temporary files are stored under the temp directory of the user profile directory. In case the same directory path does not exist in the computer you are running Backup App, you have to click **Browse** to define a new location for storing the temporary files. Otherwise, you

will not be able to perform a restore.

Temporary Directory

Temporary directory for storing restore files

Browse

10. Click **Restore** to start the restore. The status will be shown.

CBS (Host: 10.3.1.8:443)

Restoring... \\LAUREL\Departments\Customer Services\Common\KMT\Steven\Graphic\...

Estimated time left 0 sec (1.76M)

Restored 1.52M (23 files)

Elapsed time 2 sec

Transfer rate 27.51Mbit/s

🔍
✕

11. When the restore is completed, the progress bar will be green in color and the message "Restore Completed Successfully" will appear.

CBS (Host: 10.3.1.8:443)

✓ Restore Completed Successfully

Estimated time left 0 sec

Restored 8.86k (1 file)

Elapsed time 4 sec

Transfer rate 8.86kbit/s

🔍

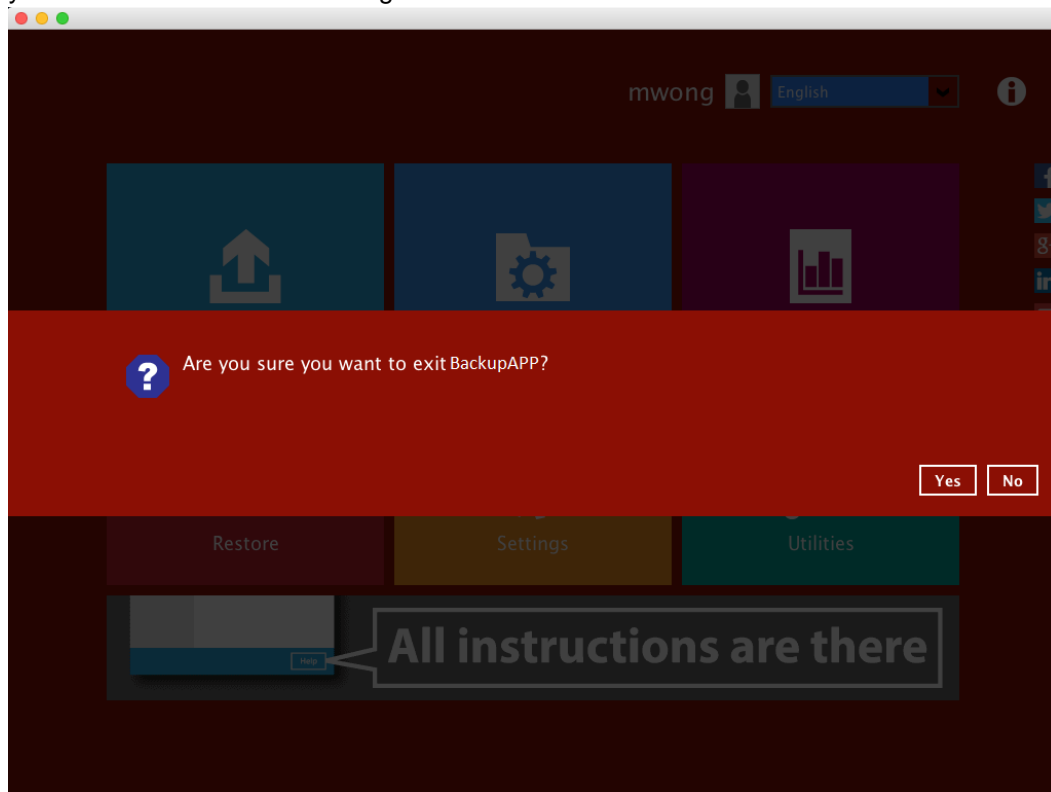
You can click the 🔍 **View** icon on the right hand side to check the log. A window will pop up to show the log. Close the pop-up window when you finish reading it.

Show All		
Type	Log	Time
🔍	Start [Mac OS X 10.11.1 (Scherrings-Mac-mini), BackupApp v7.9.0.0]	24/11/2016 10:22:46
🔍	Initializing decrypt action...	24/11/2016 10:22:46
🔍	Initializing decrypt action... Completed	24/11/2016 10:22:46
🔍	Downloading... "/Users/Scherring/Documents/Document folder 01/doc 1.docx" (Total 11k bytes)	24/11/2016 10:22:47
🔍	"/Users/Scherring/Documents/Images/pic 1.jpg" contains the same file resource. Skip restore file resource.	24/11/2016 10:22:47
🔍	"/Users/Scherring/Documents/Images/pic 2.jpg" contains the same file resource. Skip restore file resource.	24/11/2016 10:22:47
🔍	"/Users/Scherring/Documents/Images/pic 4.jpg" contains the same file resource. Skip restore file resource.	24/11/2016 10:22:47
🔍	"/Users/Scherring/Documents/Images/pic 3.jpg" contains the same file resource. Skip restore file resource.	24/11/2016 10:22:47
🔍	"/Users/Scherring/Documents/Images" contains the same file resource. Skip restore file resource.	24/11/2016 10:22:47
🔍	"/Users/Scherring/Documents/Document folder 01/doc 1.docx" contains the same file resource. Skip restore file resource.	24/11/2016 10:22:48
🔍	Restore Completed Successfully	24/11/2016 10:22:49

Logs per page 50
Page 1 / 1

12. In the Restore window, click **Cancel** to close the Restore window.

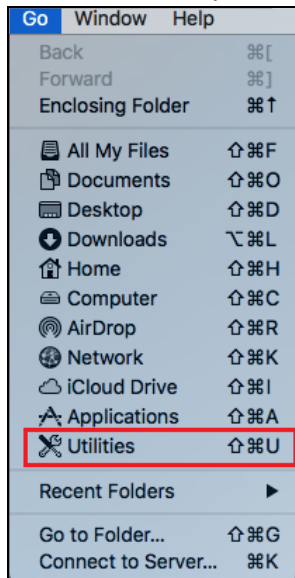
13. To exit Backup App, click the red “x” on the top left corner. A message will appear to ask for your confirmation. Click **Yes** to close the application. If you wish to use the Backup App again, you will then have to launch it again.



Appendix

Uninstall Backup App

1. Click **Go** at the top menu bar and then select **Utilities**.



2. Double-click the Terminal.app icon.



3. Use the command highlighted in **red** to enter the Applications folder.

```
#cd /Applications  
  
#[user]-Mac-mini:Applications [user]$
```

4. Use the command highlighted in **red** to enter the Backup App folder.

```
#[user]-Mac-mini:Applications [user]$ cd Backup App.app/bin  
  
#[user]-Mac-mini:bin [user]$
```

5. Use the command highlighted in **red** to execute the uninstallation. Enter the password for logging in to your Mac when prompted.

```
#[user]-Mac-mini:bin [user]$sudo sh uninstall.sh  
#Password:
```

6. The following scripts show when the uninstallation is completed.

```
#Shutdown Scheduler for Backup App A-Click Backup  
  
#Wait 5 seconds before Scheduler exits
```

```
#Kill Process by Image Name:/Applications/Backup
App.app/jvm/bin/bJW

#Ignore Process by Image Name:

#Kill Process by Image Name: /Applications/Backup
App.app/jvm/bin/bschJW

#Ignore Process by Image Name:

#Kill Process by Image Name: /Applications/Backup
App.app/jvm/bin/java

#Ignore Process by Image Name:

#Remove LaunchDaemons for com.Backup App.scheduler from service

#Remove Backup App from Your Mac OS X

#[user]-Mac-mini:bin [user]$
```